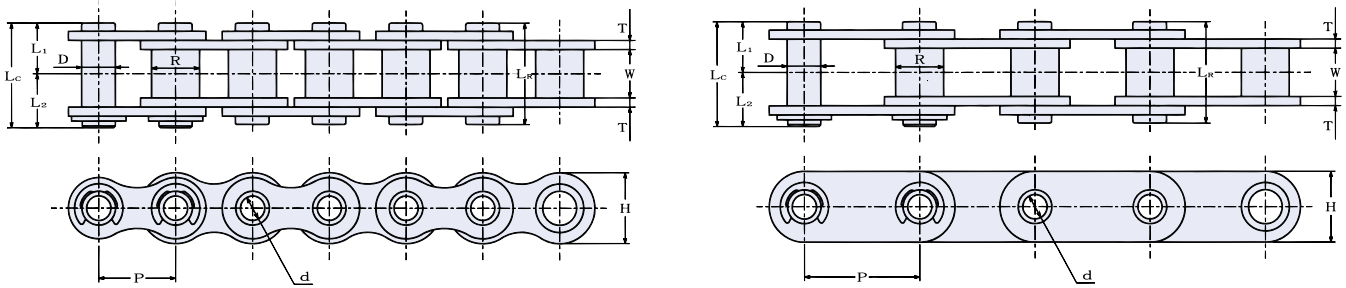


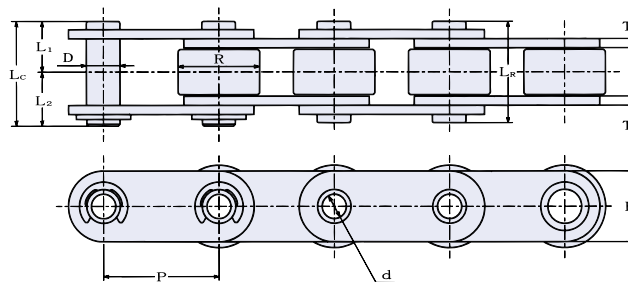
# Sintered Steel Bushing HB-type Hollow Pin Chains



## HP-SS DOUBLE PITCH

SY Chain No.	Dimensions - mm											Average Ultimate Strength	Maximum Allowable Load	Average Chain Weight
	Pitch	Roller		Pin						Plate				
		Width	Dia.	Outside	Inside	Length				Height	Thick.			
P	W	R	D	d	LR	Lc	L1	L2	H	T	kN	kN	kg/m	
HB40-SL	12.70	7.95	7.92	5.63	4.03	16.7	17.6	8.4	9.2	12.0	1.5	12.7	1.77	0.6
HB50-SL	15.875	9.53	10.16	7.09	5.13	20.1	21.5	10.1	11.2	15.0	2.0	19.6	3.14	1.0
HB60-SL	19.05	12.70	11.91	8.29	6.04	26.0	27.2	13.0	14.2	18.1	2.4	28.4	4.22	1.5
HB80-SL	25.40	15.88	15.88	11.34	8.08	32.4	34.3	16.2	18.1	24.1	3.2	51.0	7.65	2.5
HB2040-SL	25.40	7.95	7.92	5.63	4.03	16.7	17.6	8.4	9.2	12.0	1.5	12.7	1.77	0.5
HB2050-SL	31.75	9.53	10.16	7.09	5.13	20.1	21.5	10.1	11.2	15.0	2.0	19.6	3.14	0.8
HB2060-SL	38.10	12.70	11.91	8.29	6.04	26.0	27.2	13.0	14.2	18.1	2.4	28.4	4.22	1.1
HB2080-SL	50.80	15.88	15.88	11.34	8.08	32.4	34.3	16.2	18.1	24.1	3.2	51.0	7.65	2.0

# Sintered Steel Bushing HR-type Hollow Pin Chains



## HR-TYPE HOLLOW PIN CHAINS

SY Chain No.	Dimensions - mm											Average Ultimate Strength	Maximum Allowable Load	Average Chain Weight
	Pitch	Roller		Pin						Plate				
		Width	Dia.	Outside	Inside	Length				Height	Thick.			
P	W	R	D	d	LR	Lc	L1	L2	H	T	kN	kN	kg/m	
HR2042-SL	25.40	7.95	15.88	5.63	4.03	16.7	17.6	8.4	9.2	12.0	1.5	12.7	1.77	0.8
HR2052-SL	31.75	9.53	19.05	7.09	5.13	20.1	21.5	10.1	11.2	15.0	2.0	19.6	3.14	1.3
HR2062-SL	38.10	12.70	22.23	8.29	6.04	26.0	27.2	13.0	14.2	18.1	2.4	28.4	4.22	1.8
HR2082-SL	50.80	15.88	28.58	11.34	8.08	32.4	34.3	16.2	18.1	24.1	3.2	51.0	7.65	3.2